



**EINPART**  
Authorized Distributor  
North America  
Einpart.com  
(682) 382-2752

**Get Organised™**

# AUTO TOOLS

## Essentials for any garage

When working on motors and general servicing it is vital that you have the right tools ready when you are. Whether it is a spark plug socket or hose clamps you need tools that are great to work with and bring better results.





**90° HOOK TOOL**

- Ideal for retrieving lost or dropped items
- Ergonomically designed bi-material handle for easy use
- Hole in the handle for hanging or for use with a fall protection wire

Item ID: **MDH-S**



**GASKET SCRAPER**

- 22mm blade for the easy removal of gasket residue
- Ergonomically designed bi-material handle for easy use
- Hole in the handle for hanging or for use with a fall protection wire

Item ID: **MD-SCR**



**HOOK TOOL**

- Ideal for retrieving lost or dropped items
- Ergonomically designed bi-material handle for easy use
- Hole in the handle for hanging or for use with a fall protection wire

Item ID: **MDH-L**



**AWL STRAIGHT BI-MATERIAL GRIP**

- Straight awl with a round tip
- Ideal for piercing materials or for creating a start hole for screws
- Ergonomically designed bi-material handle for easy use
- Hole in the handle for hanging or for use with a fall protection wire
- Length: 164mm

Item ID: **MDA180**



**AWL ROUND TIP**

- Straight awl with a round tip
- Ideal for piercing materials or for creating a start hole for screws
- Ergonomically designed bi-material handle for easy use
- Hole in the handle for hanging or for use with a fall protection wire

Item ID: **MDA-R**



**90° HOOK TOOL BI-MATERIAL GRIP**

- Hook tool with a bent hook
- Ideal for retrieving lost or dropped items
- Ergonomically designed bi-material handle for easy use
- Hole in the handle for hanging or for use with a fall protection wire
- Length: 164mm

Item ID: **MDP90**



**TT**  
SERIES Auto Tool Sets available

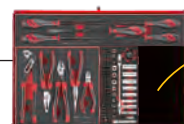
**MODULAR TOOL CONTROL SYSTEM**



**PAGE 89**

**FOAM**  
SERIES Auto Tool Sets available

**MODULAR TOOL CONTROL SYSTEM**



**PAGE 150**



### 35° HOOK TOOL BI-MATERIAL GRIP

- Hook tool with a bent hook
- Ideal for retrieving lost or dropped items
- Ergonomically designed bi-material handle for easy use
- Hole in the handle for hanging or for use with a fall protection wire
- Length: 164mm

Item ID: **MDP35**



### 125° HOOK TOOL BI-MATERIAL GRIP

- Hook tool with a bent hook
- Ideal for retrieving lost or dropped items
- Ergonomically designed bi-material handle for easy use
- Hole in the handle for hanging or for use with a fall protection wire
- Length: 164mm

Item ID: **MDP125**



**TT**  
SERIES

Store x4 of these sets in a TCI Tray

**4**  
PIECES

### HOOK AND PICK SET 4 PIECE

- Interchangeable hooks and picks with a aluminium handle
- The handle has a built in magnet for retrieving lost ferrous parts
- Includes an awl as well as 3 different hooks with 45° and 90° tips
- Supplied in the unique TengTools TJ module
- Clear fold up lid to see which set you need to use
- Sliding catch to secure the set when not in use

Item ID: **TJ149**



### HOSE CLIP DRIVER 6MM/7MM

- Fits most commonly used worm drive hose clips such as Jubilee® hose clips
- Flexible shaft for easier access in confined spaces

ITEM ID:	Description
MD503N	Hose clip driver
MD503RK	Replacement 6/7mm socket



### HOSE CLIP DRIVER 7MM

- Fits most commonly used worm drive hose clips such as Jubilee® hose clips
- Flexible shaft for easier access in confined spaces

Item ID: **MD503NA**



### HOSE CLIP DRIVER 8MM

- Fits most commonly used worm drive hose clips such as Jubilee® hose clips
- Flexible shaft for easier access in confined spaces

Item ID: **MD503ND**





**HOSE CLAMP**

- Specially designed jaws prevent internal hoses from damage when clamping
- Light weight
- Easy to use
- Non conductive

ITEM ID:	Capacity mm	Capacity AF
AT080	6 to 19	¼" to ¾"
AT085	6 to 32	¼" to 1-¼"
AT090	19 to 57	¾" to 2-¼"



**SPARK PLUG BOOT PLIER**

- Designed to pull the spark plug boot from the spark plug without disturbing the HT lead
- Spring action for easier use particularly in confined spaces
- Plastic grip on the handle and the gripping area

ITEM ID:	Length mm	Weight g
SPBP20	250	297



**SPARK PLUG SOCKETS**

- Chrome vanadium
- Rubber insert holds the spark plug in place to prevent it dropping
- Satin finish for a better grip when handling the socket
- 6 point single hexagon socket for a better grip
- Ball bearing recess on the female end to grip the ratchet
- Supplied with a metal socket clip for use with a socket rail

ITEM ID:	Drive	Size	Width mm	Length mm	Thread Size	Weight g
M380039-C	3/8"	14mm	20	64	8	73
M380040-C	3/8"	16mm	21.4	64	10	100
M380041-C	3/8"	16mm Flexible	22	85	10	117
M380042-C	3/8"	18mm	23.5	70	12	130
M380046-C	3/8"	21mm	28	70	14	160
M380047-C	3/8"	21mm Flexible	28	91	14	169
M120040-C	1/2"	16mm	21.4	70	10	165
M120042-C	1/2"	18mm	24.2	70	12	165
M120046-C	1/2"	21mm	28	70	14	165



**TT SERIES** Auto Tool Sets available

**MODULAR TOOL CONTROL SYSTEM**



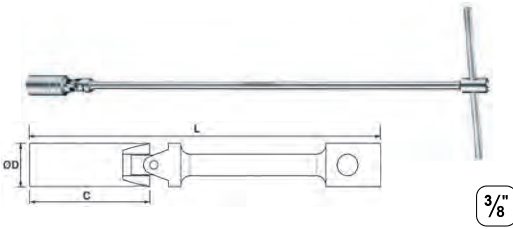
**PAGE 89**

**FOAM SERIES** Auto Tool Sets available

**MODULAR TOOL CONTROL SYSTEM**



**PAGE 150**



### 3/8" T-BAR SPARK PLUG SOCKET

- Extra long swivelling spark plug socket
- Long reach bar ideal for use in hard to reach places
- Universal joint and magnet at the socket
- Includes a T bar for fast pre-tightening and additional torque

ITEM ID:	Drive	Size mm	D mm	C mm	L mm	Weight g
TBUSP14	3/8"	14	18.8	60	520	380
TBUSP16	3/8"	16	21.8	60	520	400
TBUSP21	3/8"	21	27.8	60	520	440
T-HD01	200mm x 8mm spare bar for use with T-bar spark plug sockets					



### SPARK PLUG THREAD CLEANER

- Cleaning tool for spark plug threads in engine blocks

ITEM ID:	For Threads mm
TRC1012	10 x 1 & 12 x 1.25
TRC1418	14 x 1.25 & 18 x 1.5



### OIL FILTER REMOVAL TOOL STRAP TYPE

- Fully adjustable heavy duty strap
- Suitable for workshop tasks where round items need to be gripped
- Strong, drop forged steel handle for high leverage
- Reinforced, rubberised non stretch strap for a good grip
- Grips oil filters, etc up to 160mm diameter
- Overall length 230mm

ITEM ID:	Description
9123	Oil filter wrench
9123RK	Replacement Strap



### OIL FILTER REMOVAL PLIER

- 53-118mm capacity to suit most oil filters
- Two stage grip areas on the jaws for added versatility
- Ideal for removing and installing objects of many shapes when a tight grip is required
- Chrome vanadium with drop forged jaws, heat treated and nickel plated

Item ID: **409**





1/2"

**1/2" OIL FILTER REMOVAL TOOL STRAP TYPE**

- Nylon webbing strap for gripping oil filters without causing damage
- 1/2" drive carbon steel adaptor for use with a ratchet or flex handle
- Grips oil filters up to 130mm diameter

ITEM ID:	Description	Drive	Capacity mm
9110	Oil filter wrench	1/2"	130
9110RK-1	Replacement Strap		



1/2"

**1/2" OIL FILTER REMOVAL TOOL CHAIN TYPE**

- Chain for gripping oil filters even when oily or damaged
- 1/2" drive carbon steel adaptor for use with a ratchet or flex handle
- Grips oil filters up to 120mm diameter

ITEM ID:	Description	Drive	Capacity mm
9120	Oil filter wrench	1/2"	120
9120RK-1	Replacement Chain		



1/2"

**1/2" HEAVY DUTY OIL FILTER REMOVAL TOOL**

- Maximum tensile strength of 1,850 kgf for the most stubborn of oil filters
- Chain for gripping oil filters even when oily or damaged
- 1/2" drive adaptor for use with a ratchet or 24mm spanner
- Grips oil filters up to 150mm diameter

Item ID: **9120HD**



**DRAIN PLUG**

- Double ended design to give 2 tools in 1
- For drain plugs on engines and gear boxes
- Use with a T bar or a 21mm socket or wrench

ITEM ID:	Size
DP0810	8mm hex x 10mm hex
DP0812	8mm square x 3/8" square
DP1012	5/16" hex x 3/8" hex
DP1112	11mm square x 12mm hex
DP1314	13mm square x 14mm hex
DP1716	17mm hex x 1/2" hex



**PISTON RING COMPRESSOR**

- Designed for holding piston rings in place when removing or replacing pistons
- 4 tightening bands suitable for cylinder diameters from 90 to 175mm
- Self locking ratchet pawl prevents premature release and allows a positive locking action
- Friction proof band edge gives a smooth and accurate action

Item ID: **AT020**

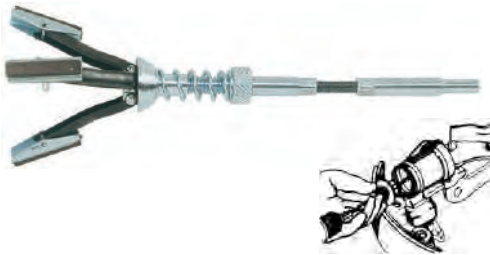




### ADJUSTABLE ENGINE CYLINDER HONING TOOL

- Adjustable to enable use on cylinders between 50 and 180mm diameter
- Spring tension adjustment to give a positive cutting action
- Suitable for use with air tools
- Supplied with 280 grit stones 100x10x8mm

ITEM ID:	Description
AT040	Engine cylinder honing tool
AT040-SM	Replacement 280 grit stones (3 Pieces) 100x10x8mm



### ADJUSTABLE BRAKE CYLINDER HONING TOOL

- Adjustable to enable use on cylinders between 20 and 68mm diameter
- Spring tension adjustment to give a positive cutting action
- Suitable for use with air tools
- Supplied with 220 grit stones 28.5x5x2mm

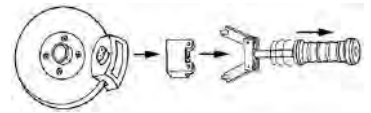
ITEM ID:	Description
AT180	Brake cylinder honing tool
AT180-S	Replacement 220 grit stones (3 Pieces) 28.5x5x2mm



### BRAKE PIN PUNCH

- 5.5mm parallel pin punch for removing pins from brake disc pads
- Overall length 165mm to clear most pin holes

Item ID: **AT170**



### BRAKE DISC PAD PULLER

- Sliding hammer function to help release brake pads from callipers
- Simply hook on to the disc pad with 5mm pins

Item ID: **AT330**



### BALL JOINT SEPERATOR

- Simple to use tool for separating ball joints

ITEM ID:	Opening mm	Adjustable Height mm
AT191	29	60
AT192	40	80
AT194	46	100







**SPECIALIST AUTOMOTIVE SOCKETS**

ITEM ID:	Drive	Size	Length mm	Application
920242	1/2"	1-5/16"	78	Wheel nuts
920248	1/2"	1-1/2"	78	Ball Joints
920624N	1/2"	24mm	78	Oil pressure switch
920627N	1/2"	27mm	78	Injectors
920628N	1/2"	28mm	78	Diesel Injectors
920629N	1/2"	29mm	78	Thermostat switch
920630N	1/2"	30mm	78	Hub nuts
920632N	1/2"	32mm	78	Hub nuts/drive shafts
920635N	1/2"	35mm	78	Hub nuts
920636N	1/2"	36mm	78	Hub nuts
940641-C	3/4"	41mm	58	Hub nuts
940258	3/4"	1-13/16"	58	Deep ball joint socket
120955-C	1/2"	TX55	100	Cylinder head bolts
AT350	1/2"	29mm	90	Oxygen sensor socket
AT355	3/8"	22mm	90	Oxygen sensor socket
AT360	1/2"	27mm	85	Injector socket
AT365	3/8"	7/8"	80	Vacuum switch socket
AT370	3/8"	11/16"	74	Oil sender socket
AT375	1/2"	7/8"	50	Heated oxygen sensor socket
AT380	3/8"	7/8"	30	Offset Oxygen sensor socket



**MAGNETIC RACK FOR TYRE TOOLS**

- Magnetic shelf for storing tyre tools
- Designed to take 4 sockets, torque wrench and an air wrench
- Can be easily fitted to any flat ferrous material surface
- Powerful magnets for secure fixing
- Ideal for using on the side of a tool cabinet

Item ID: **BDIS-TYR**



**TT**  
SERIES Auto Tool Sets available

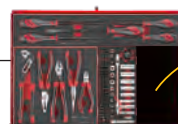
**MODULAR TOOL CONTROL SYSTEM**



**PAGE 89**

**FOAM**  
SERIES Auto Tool Sets available

**MODULAR TOOL CONTROL SYSTEM**



**PAGE 150**



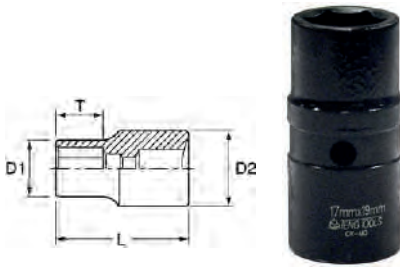


1/2"

### 1/2" WHEEL WRENCH

- 1/2" drive telescopic wheel wrench
- Extends from 14" (35cm) to 21" (55cm) making it ideal for keeping in the car
- Chrome vanadium steel for added strength and higher torque
- Supplied with a double ended impact sockets

ITEM ID:	Drive	Size mm	Weight g
1202	1/2"	17 x 19	900
1202A	1/2"	21 x 22	905



1/2" mm

### 1/2" DOUBLE ENDED IMPACT SOCKET METRIC

- Double ended 1/2" drive socket to give two sizes in one socket
- Chrome molybdenum for use with power tools
- Black phosphate finish for easy identification as an impact socket accessory

ITEM ID:	Size mm	L mm	D1 mm	D2 mm
9291719	17 / 19	58	26	28
9292122	21 / 22	58	30	32



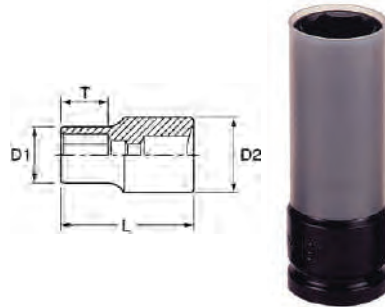
3 Pieces 1/2" mm

### 1/2" DOUBLE ENDED IMPACT SOCKET SET

- Includes the most commonly used wheel nut socket sizes
- Chrome molybdenum for use with power tools
- Black phosphate finish for easy identification as an impact socket

3" Extension bar
Double Ended Wheel Nut Sockets:
17 x 19mm, 21 x 22mm

Item ID: **9203N1**



1/2" mm

### 1/2" IMPACT SOCKET WHEEL NUT

- Thin wall design for reaching in to recesses
- Protective sleeve for use on alloy wheels
- DIN standard design for use with a retaining pin and ring
- Chrome molybdenum for use with power tools
- Ring and pin fixing hole on the female end to secure the socket to the air gun

ITEM ID:	Size mm	L mm	T mm	D1 mm	D2 mm	Weight g
920517N	17	85	27	26	32	260
920519N	19	85	27	29	32	270
920521N	21	85	27	29	32	380





3 Pieces 1/2" mm

**1/2" IMPACT SOCKET WHEEL NUT SET**

- Thin wall design for reaching in to recesses
- Protective sleeve for use on alloy wheels
- DIN standard design for use with a retaining pin and ring
- Chrome molybdenum for use with power tools
- Ring and pin fixing hole on the female end to secure the socket to the air gun

Item ID: **9203N**



**TYRE LEVER**

- Traditional flat design for easy use
- Manufactured in medium carbon steel (HRC40 +/-2%) for high leverage

ITEM ID:	Size mm	Size AF
AT20512	304	12
AT20516	406	16
AT20520	508	20
AT20524	609	24



11 Pieces - + \*

**BICYCLE KEY SET 11 PIECES**

- Designed for cyclists to carry easily
- Includes hexagon, TX and screwdriver keys together with a tyre lever and chain repair tool
- Chrome nickel finish
- Supplied in a handy fold up aluminium case

Ergonomically Designed Aluminium Holder, Tyre lever, Chain tool

Individual Keys:

	mm: 1 x 5.5
	PH2
	TX25 TX30
	mm: 4 5 6

Item ID: **1473**



**WING COVER**

- Full length magnetic strip to hold the cover in place on the vehicle bodywork
- Protects the paintwork from scratching when working on the vehicle
- Heavy duty red PVC with a cloth backing
- Includes the TengTools eyes logo in full colour
- Measures 40 x 107cm to provide a good area of protection

Item ID: **FC01**





**SUCTION LIFTER SINGLE**

- Handles open or close to engage or release the suction cups
- Ideal for lifting of items with flat, smooth surfaces such as glass
- Can also be used to pull out dents in bodywork panels

ITEM ID:	Suction Cups	Max Load Kg	Cup Diameter mm	Weight g
SL01	1	30	118	310



**SUCTION LIFTER TRIPLE**

- Handles open or close to engage or release the suction cups
- Ideal for lifting of items with flat, smooth surfaces such as glass
- Can also be used to pull out dents in bodywork panels

ITEM ID:	Suction Cups	Max Load Kg	Cup Diameter mm	Weight g
SL03	3	120	118	900



**SUCTION LIFTER DOUBLE**

- Handles open or close to engage or release the suction cups
- Ideal for lifting of items with flat, smooth surfaces such as glass
- Can also be used to pull out dents in bodywork panels

ITEM ID:	Suction Cups	Max Load Kg	Cup Diameter mm	Weight g
SL02	2	60	118	600



**DOLLY**

- For panel beating of sheet metal
- Use together with TengTools body working hammers

ITEM ID:	Shape	Length mm	Width mm	Height mm	Weight g
AT415	Curved	128	58	40	1100
AT420	Heel	80	60	30	900





**HAMMER BODY CROWN FACE STRAIGHT PEIN**

- Forged alloy steel head for durability
- Mirror polished face for a better contact with the metal
- Hickory handle for a traditional finish

ITEM ID:	Face Diameter mm	Weight g
HMBH01	32.5	400



**HAMMER BODY CROWN FACE POINT PICK**

- Forged alloy steel head for durability
- Mirror polished face for a better contact with the metal
- Hickory handle for a traditional finish

ITEM ID:	Face Diameter mm	Weight g
HMBH02	32.5	350



**HAMMER BODY CROWN FACE SQUARE MILLED**

- Forged alloy steel head for durability
- Mirror polished face for a better contact with the metal
- Hickory handle for a traditional finish

ITEM ID:	Face Diameter mm	Weight g
HMBH03	32.5	400



**DEAD BLOW HAMMER**

- Dead blow hammer
- Head filled with steel balls to prevent the hammer from bouncing
- Dead blow action particularly useful to reduce marking on the surface being hit

ITEM ID:	Face Diameter mm	Weight g
HMDH35	35	300
HMDH45	45	490
HMDH55	55	980
HMDH65	65	1365



**TT  
SERIES**

4

5  
PIECES

**BODYWORK HAMMER SET TT4 5 PIECES**

- A selection of hammers for use in the automotive body shop or metal working area
- Organised in a tool tray module size 4 (TT4)

Hammers:

Dead blow hammers with 35 and 55mm diameter heads, crown face hammers with straight pein, pick heads and square milled face

Item ID: **TTPSAD**

